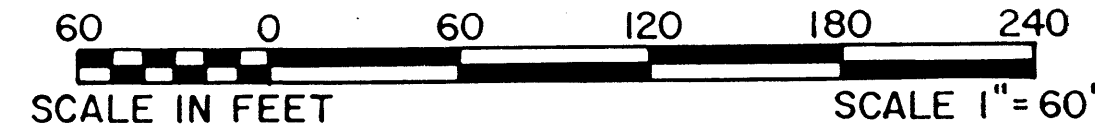


DUCKWOOD P.U.D.
IN PART OF SECTION 36, TOWNSHIP 38 SOUTH, RANGE 41 EAST
MARTIN COUNTY, FLORIDA
GEE & JENSON
ENGINEERS - ARCHITECTS - PLANNERS, INC.
WEST PALM BEACH, FLORIDA
APRIL 1985

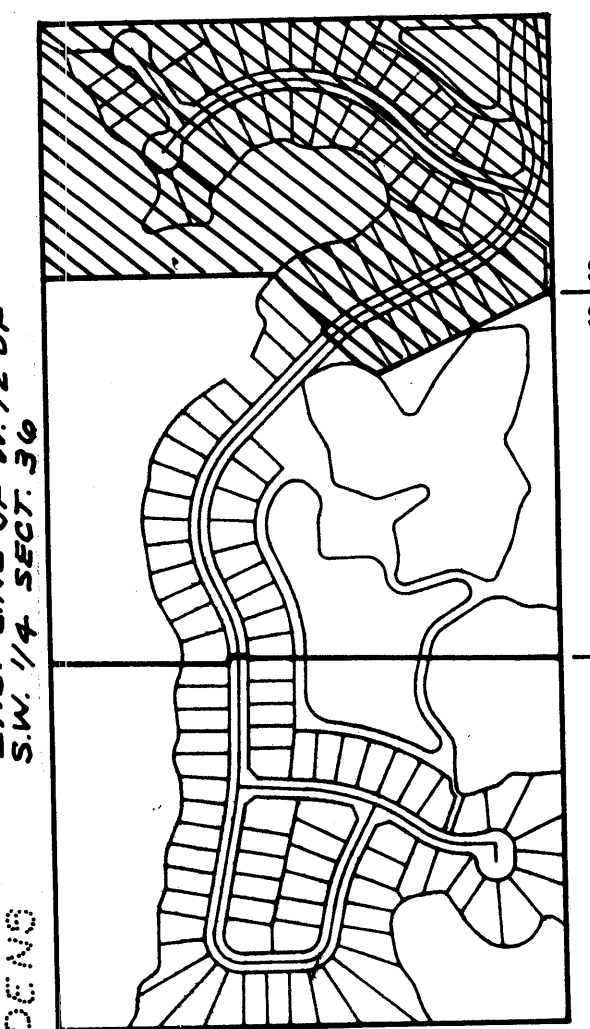
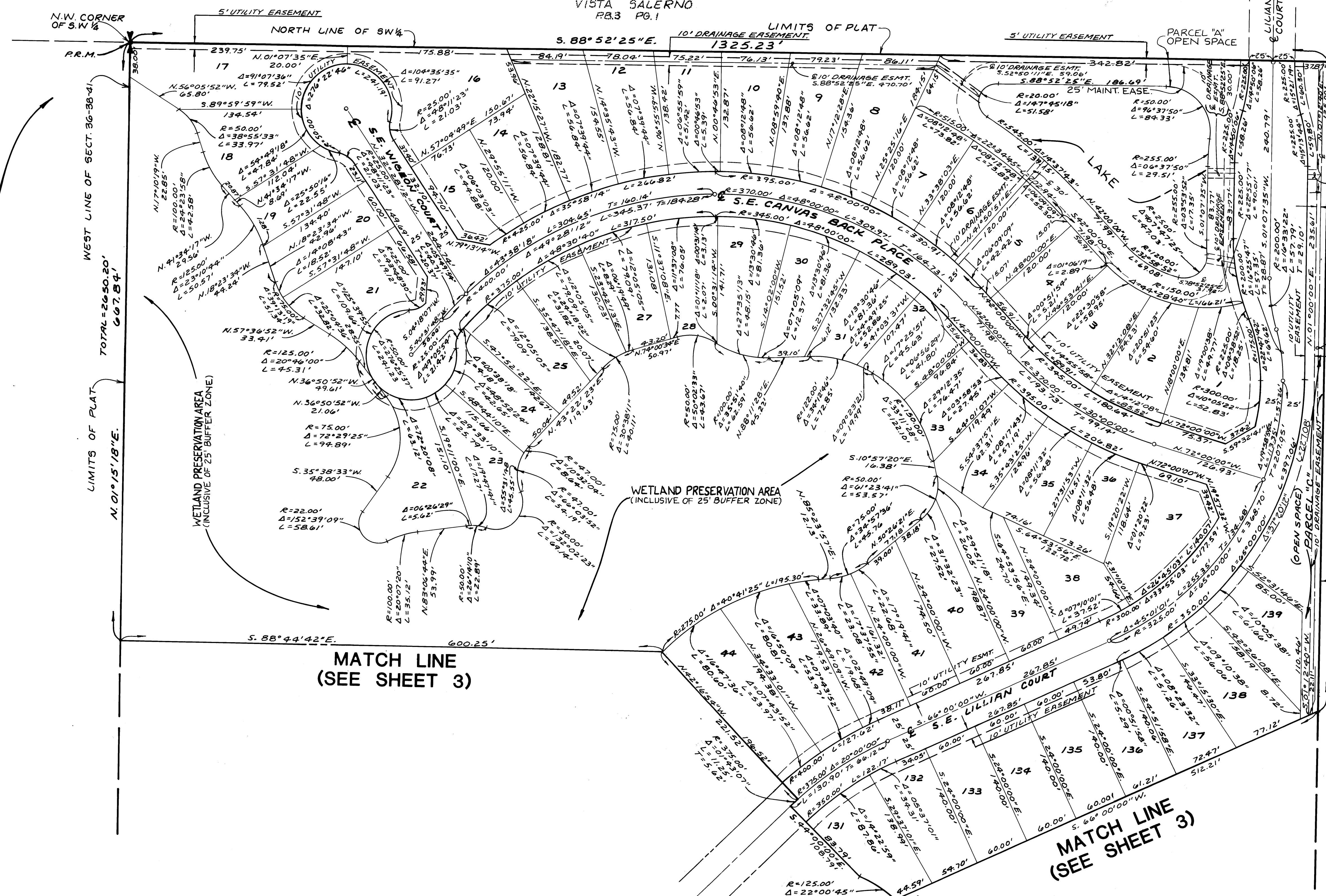
I, Louise V. Isaacs, Clerk of the Circuit Court of Martin County, Florida, hereby certify that this plat was filed for record in Plat Book 20, Pages 9, Martin County, Florida Public Records, this _____ day of _____ 1985 A.D.

LOUISE V. ISAACS, CLERK
CIRCUIT COURT
MARTIN COUNTY, FLORIDA

FILE NO. _____
BY: _____
Deputy Clerk



UNPLATTED



KEY MAP
N.T.S.

MATCH LINE
(SEE SHEET 3)

MATCH LINE
(SEE SHEET 3)

COMPUTED WY.J.A.D.
DRAWN D.L.B.
CHECKED HAP
APPROVED _____